

# Oceanview

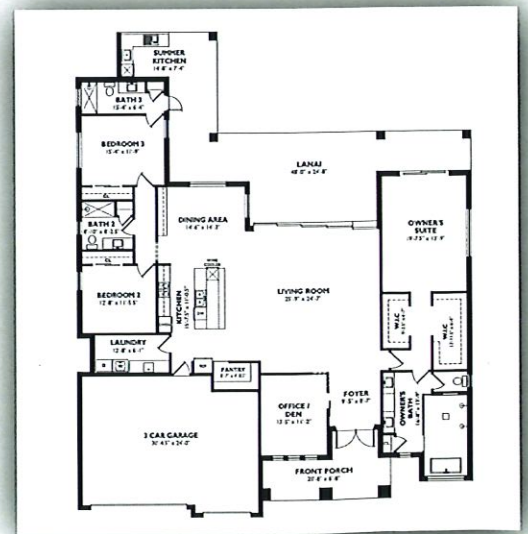
MODEL



2,700 SQ. FT | 3 Bedrooms + Den | 3 Bathrooms | 3 Car Garage



*Design - Build - Live*



# *Oceanview* MODEL

- 3 Bedrooms + Den
- 3 Bathrooms
- 3 Car Garage
- All Block Construction w/ 5/8" Plywood Roof Decking
- Home Building to Sustain 160mph Winds
- Impact Windows and Doors
- 8' Interior Doors
- 14' Ceilings
- 6" Base Mouldings
- 4" Door Casings
- Insulated Garage Doors with Electric Opener and 2 Remotes
- 50 Year Roof Shingles
- 16 SEER High Efficiency HVAC with Heat Pump and Programmable Thermostat
- Tankless Direct Hot Water
- Decorative Light Fixtures Throughout with Ceiling Fans in All Bedrooms
- Tile Throughout Including All Bedrooms
- Full Wall Tile in All Wet Areas
- Soft Close Plywood Cabinets with Granite Tops in Kitchen and Baths
- Optional Pool Package
- Stainless Steel Appliance Package
- Under Truss Outdoor Kitchen
- Flora-Tam Sod with Automatic Sprinklers and Electric Timer
- Solid Marble Window Sills
- All Decora Light Switches and Receptacles
- Brick Paver Driveway and Lanai
- Complete Landscape Package
- 2-10 Home Builders Warranty

**FOR MORE INFORMATION, CONTACT:**



*Design - Build - Live*

**239.558.5821**

[Info@TotoCustomHomes.com](mailto:Info@TotoCustomHomes.com)

**VISIT OUR  
WEBSITE**

[www.TotoCustomHomes.com](http://www.TotoCustomHomes.com)